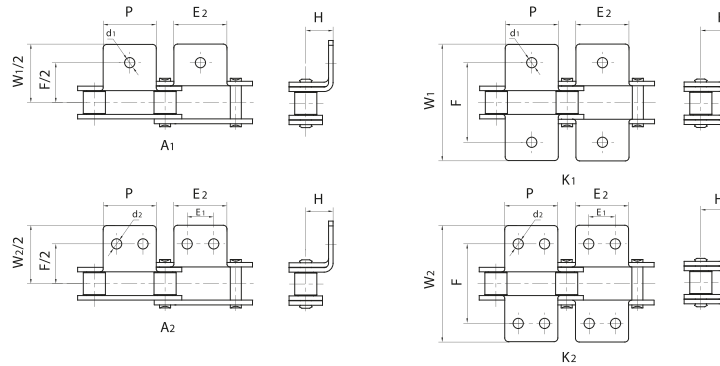


DOUBLE PITCH ROLLER CHAINS

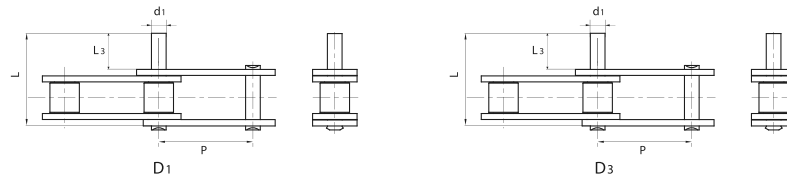


DOUBLE PITCH ROLLER CHAINS-ATTACHMENTS



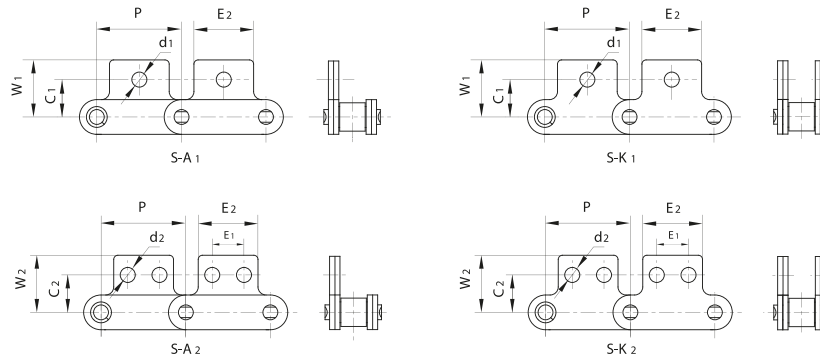
DIN/ISO Chain No.	ANSI Chain No.	P mm	W ₁ mm	W ₂ mm	F mm	E ₁ mm	E ₂ mm	d ₁ mm	d ₂ mm	H mm
C208A	C2040	25.4	39.6	39.6	25.4	9.5	19.1	3.6	3.6	9.1
C208AL	C2042									
C208AHC										
C208AHL										
C2040H	25.4	39.6	39.6	25.4	9.5	19.1	3.6	3.6	9.1	
C2042H										
C208B	/	25.4	39.6	38.6	25.4	12.7	24	4.5	4.5	9.1
C208BL										
C210A	C2050	31.75	48.4	48.4	31.8	11.9	24	5.5	5.2	11.1
C210AL	C2052									
C210AH	C2050H	31.75	48.4	48.4	31.8	11.9	24	5.5	5.2	11.1
C210AHL	C2052H									
C212A	C2060	38.1	61.06	61.06	42.86	14.3	28.6	5.2	5.2	14.7
C212AL	C2062									
C212AH	C2060H	38.1	61.06	61.06	42.86	14.3	28.6	5.5	5.2	14.7
C212AHL	C2062H									
C216A	C2080	50.8	76.2	76.2	55.6	19.1	38.1	6.8	6.8	19.1
C216AL	C2082									
C216AH	C2080H	50.8	79.4	79.4	55.6	19.1	38.1	6.8	6.8	19.1
C216AHL	C2082H									
C220A	C2100	63.5	98.4	98	66.6	23.8	47.5	8.8	9.5	23.4
C220AL	C2102									
C220AH	C2100H	63.5	98.4	98	66.6	23.8	47.5	8.8	9.5	23.4
C220AHL	C2102H									
C224A	C2120	76.2	118.3	118.3	79.3	28.6	57.1	11	11	27.8
C224AL	C2122									
C224AH	C2120H	76.2	118.3	118.3	79.3	28.6	57.1	11	11	27.8
C224AHL	C2122H									

DOUBLE PITCH ROLLER CHAINS-ATTACHMENTS



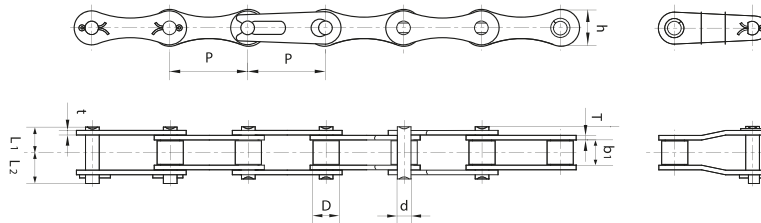
DIN/ISO Chain No.	ANSI Chain No.	P mm	L mm	L ₃ mm	d ₁ mm
C208A	C2040	25.4	25	9.5	3.96
C208AL	C2042				
C208AH					
C208AHL					
C2040H	25.4	26.9	9.5	3.96	
C2042H					
C208B	/	25.4	28.6	12.7	4.45
C208BL					
C210A	C2050	31.75	31.2	11.9	5.08
C210AL	C2052				
C210AH	C2050H	31.75	32.8	11.9	5.08
C210AHL	C2052H				
C212A	C2060	38.1	38.3	14.3	5.94
C212AL	C2062				
C212AH	C2060H	38.1	41.6	14.3	5.94
C212AHL	C2062H				
C216A	C2080	50.8	50.2	19.1	7.92
C216AL	C2082				
C216AH	C2080H	50.8	53.2	19.1	7.92
C216AHL	C2082H				
C220A	C2100	63.5	61.5	23.8	9.52
C220AL	C2102				
C220AH	C2100H	63.5	65	23.8	9.52
C220AHL	C2102H				
C224A	C2120	76.2	76.4	28.6	11.1
C224AL	C2122				
C224AH	C2120H	76.2	79.4	28.6	11.1
C224AHL	C2122H				
C232A	C2160	101.6	99.3	38.1	14.27
C232AL	C2162				
C232AH	C2160H	101.6	102.7	38.1	14.27
C232AHL	C2162H				

DOUBLE PITCH ROLLER CHAINS-ATTACHMENTS



DIN/ISO Chain No.	ANSI Chain No.	P mm	W ₁ mm	W ₂ mm	C ₁ mm	C ₂ mm	E ₁ mm	E ₂ mm	d ₁ mm	d ₂ mm
C208A	C2040	25.4	19.4	19.4	11.1	13.5	9.5	19	3.6	3.6
C208AL	C2042									
C208AHC										
C208AHL										
C2040H	25.4	39.6	19.4	11.1	13.5	9.5	19	3.6	3.6	
C2042H										
C208B	/	25.4	19.8	19.8	11.1	13.2	12.7	24	4.5	4.5
C208BL										
C210A	C2050	31.75	24.6	25	14.3	15.9	11.9	23.8	6.35	5.2
C210AL	C2052									
C210AH	C2050H	31.75	24.6	25	14.3	15.9	11.9	23.8	6.35	5.2
C210AHL	C2052H									
C212A	C2060	38.1	30.1	29.8	17.5	19.05	14.3	28.6	8.33	5.2
C212AL	C2062									
C212AH	C2060H	38.1	30.1	29.8	17.5	19.05	14.3	28.6	8.33	5.2
C212AHL	C2062H									
C216A	C2080	50.8	37.4	37.4	22.2	25.5	19.05	38.1	11.0	6.8
C216AL	C2082									
C216AH	C2080H	50.8	37.4	37.4	22.2	25.5	19.05	38.1	11.0	6.8
C216AHL	C2082H									
C220A	C2100	63.5	47.8	47.8	28.6	31.8	23.8	47.5	13.1	8.2
C220AL	C2102									
C220AH	C2100H	63.5	47.8	47.8	28.6	31.8	23.8	47.5	13.1	8.2
C220AHL	C2102H									
C224A	C2120	76.2	63	63	33.3	37.3	28.6	57	15.0	10.5
C224AL	C2122									
C224AH	C2120H	76.2	63	63	33.3	37.3	28.6	57	15.0	10.5
C224AHL	C2122H									

TRANSMISSION DOUBLE PITCH ROLLER CHAINS



DIN/ISO Chain	ANSI Chain	P	b ₁ (min)	D (max)	d	L ₁	L ₂	h	t/T	Q _{min}	Q ₀	q
No.	No.	mm	mm	mm	mm	mm	mm	mm	mm	kN	kN	kg/m
208A	2040	25.4	7.85	7.92	3.96	8.3	9.6	12	1.52	13.8	18	0.43
208B	/	25.4	7.75	8.51	4.45	8.5	9.9	11.8	1.65	17.8	20.5	0.49
210A	2050	31.75	9.4	10.16	5.08	10.25	11.85	15	2	21.8	31	0.70
210B	/	31.75	9.65	10.16	5.08	9.6	10.9	14.6	1.65	22.2	27.5	0.63
212A	2060	38.1	12.57	11.91	5.94	12.65	14.35	18	2.4	31.1	42	1.02
212B	/	38.1	11.68	12.07	5.72	11	12.4	16	1.8	28.9	32.5	0.78
216A	2080	50.8	15.75	15.88	7.92	16.2	17.9	23.5	3.2	55.6	70.2	1.76
220A	2100	63.5	18.9	19.05	9.52	19.8	23.3	30	4	86.7	115	2.55
224A	2120	76.2	25.22	22.23	11.1	25	28.3	25.8	4.9	124.6	170	4.06

Q_{min} Kn = Ultimate tensile strength

Q₀ Kn = Average tensile strength

Connecting Type:

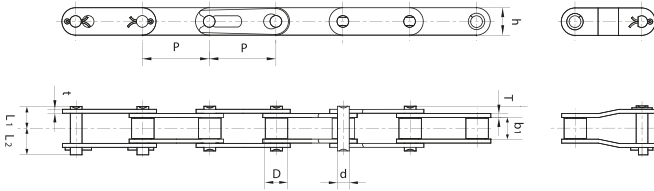
The series less than 2060 (including 2060) is preferred for spring clip type;

The series larger than 2080 (including 2080) is preferred for cottered type.

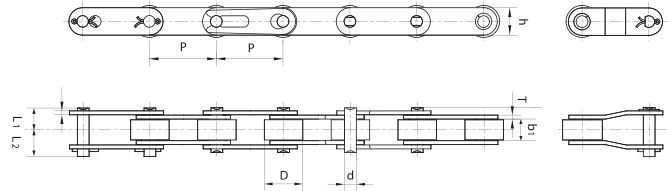
CONVEYOR DOUBLE PITCH ROLLER CHAINS



Standard Roller Type



Oversize Roller Type



DIN/ISO Chain	ANSI Chain	P	b ₁ (min)	D (max)	d	L ₁	L ₂	h	t/T	Q _{min}	Q ₀	q
No.	No.	mm	mm	mm	mm	mm	mm	mm	mm	kN	kN	kg/m
C208AH	C2040H	25.4	7.85	7.92	3.96	9.25	10.55	12	2	13.8	18	0.64
C208AHL	C2042H	25.4	7.85	15.88	3.96	9.25	10.55	12	2	13.8	18	0.98
C210AH	C2050H	31.75	9.4	10.16	5.08	11.05	12.45	15	2.4	21.8	31	0.96
C210AHL	C2052H	31.75	9.4	19.05	5.08	11.05	12.45	15	2.4	21.8	31	1.41
C212AH	C2060H	38.1	12.57	11.91	5.94	14.3	15.7	18	3.2	31.1	42	1.52
C212AHL	C2062H	38.1	12.57	22.23	5.94	14.3	15.7	18	3.2	31.1	42	2.22
C216AH	C2080H	50.8	15.75	15.88	7.92	17.85	19.25	23.5	4	55.6	70.2	2.53
C216AHL	C2082H	50.8	15.75	28.58	7.92	17.85	19.25	23.5	4	55.6	70.2	3.58
C220AH	C2100H	63.5	18.9	19.05	9.52	21.55	25.05	30	4.9	86.7	115	3.82
C220AHL	C2102H	63.5	18.9	39.67	9.52	21.55	25.05	30	4.9	86.7	115	5.96
C224AH	C2120H	76.2	25.22	22.23	11.1	26.5	20.9	35.8	5.6	124.6	170	5.40
C224AHL	C2122H	76.2	25.22	44.45	11.1	26.5	20.9	35.8	5.6	124.6	170	8.33
C232AH	C2160H	101.6	31.55	28.56	14.27	33.75	37.65	48	7.2	222.4	290	9.08
C232AHL	C2162H	101.6	31.55	57.15	14.27	33.75	37.65	48	7.2	222.4	290	13.69

Q_{min} Kn = Ultimate tensile strenght

Q₀ Kn = Average tensile strength

Connecting Type:

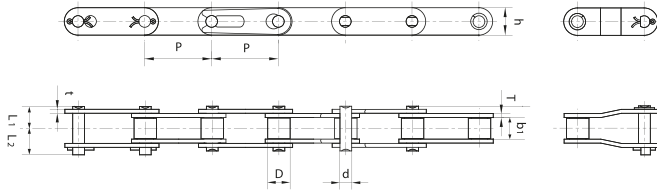
The series less than C2060H (including C2060H) is preferred for spring clip type;

The series larger than C2080H (including C2080H) is preferred for cottored type.

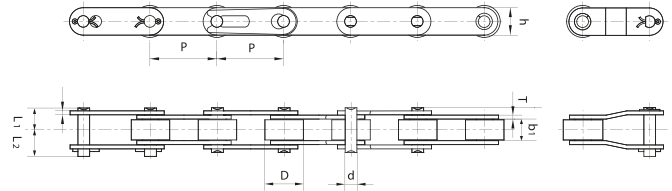
CONVEYOR DOUBLE PITCH ROLLER CHAINS



Standard Roller Type



Oversize Roller Type



DIN/ISO Chain	ANSI Chain	P	b ₁ (min)	D (max)	d	L ₁	L ₂	h	t/T	Q _{min}	Q ₀	q
No.	No.	mm	mm	mm	mm	mm	mm	mm	mm	kN	kN	kg/m
C208A	C2040	25.4	7.85	7.92	3.96	8.3	9.6	12	1.52	13.8	18	0.52
C208AL	C2042	25.4	7.85	15.88	3.96	8.3	9.6	12	1.52	13.8	18	0.88
C208B	/	25.4	7.75	8.51	4.45	8.5	9.9	11.8	1.65	17.8	20.5	0.57
C208BL	/	25.4	7.75	15.88	4.45	8.5	9.9	11.8	1.65	17.8	20.5	0.90
C210A	C2050	31.75	9.4	10.16	5.08	10.25	11.85	15	2	21.8	31	0.84
C210AL	C2052	31.75	9.4	19.05	5.08	10.25	11.85	15	2	21.8	31	1.31
C212A	C2060	38.1	12.57	11.91	5.94	12.65	14.35	18	2.4	31.1	42	1.23
C212AL	C2062	38.1	12.57	22.23	5.94	12.65	14.35	18	2.4	31.1	42	1.93
C216A	C2080	50.8	15.75	15.88	7.92	16.2	17.9	23.5	3.2	55.6	70.2	2.13
C216AL	C2082	50.8	15.75	28.58	7.92	16.2	17.9	23.5	3.2	55.6	70.2	3.14
C220A	C2100	63.5	18.9	19.05	9.52	19.8	23.3	30	4	86.7	115	3.26
C220AL	C2102	63.5	18.9	39.67	9.52	19.8	23.3	30	4	86.7	115	5.40
C224A	C2120	76.2	25.22	22.23	11.1	25	28.3	35.8	4.9	124.6	170	4.78
C224AL	C2122	76.2	25.22	44.45	11.1	25	28.3	35.8	4.9	124.6	170	7.78
C232A	C2160	101.6	31.55	28.56	14.27	32.05	35.75	48	6.4	222.4	290	8.25
C232AL	C2162	101.6	31.55	57.15	14.27	32.05	35.75	48	6.4	222.4	290	12.85

Q_{min} Kn = Ultimate tensile strenght

Q₀ Kn = Average tensile strength

Connecting Type:

The series less than C2060 (including C2060) is preferred for spring clip type;

The series larger than C2080 (including C2080) is preferred for cottered type.